



8-in-1 Multi Cooker

Model Number 8IN1MULTI

INSTRUCTION MANUAL

AFTER SALES SUPPORT

1300 112 534

tempo.org/support

MODEL: 8IN1MULTI PRODUCT CODE: 713681 01/2024



Welcome

Congratulations on choosing to buy a STIRLING® product.

All products brought to you by STIRLING® are manufactured to the highest standards of performance and safety and, as part of our philosophy of customer service and satisfaction, are backed by our comprehensive 1 Year Warranty.

We hope you will enjoy using your purchase for many years to come.

Contents

- 02 Welcome**
- 04 Warranty Details**
- 05 General Safety Instructions**
- 09 Product Overview**
- 11 Getting Started**
- 14 Instructions**
- 19 FAQs and Troubleshooting Guide**
- 20 Other Useful Information**
- 23 Repair and Refurbished Goods or Parts Notice**



8-in-1 Multi Cooker

Warranty Details

REGISTER YOUR PURCHASE AT www.aldi.com.au/en/about-aldi/product-registration/ TO KEEP UP-TO-DATE WITH IMPORTANT PRODUCT INFORMATION

The product is guaranteed to be free from defects in workmanship and parts for a period of 12 months from the date of purchase. Defects that occur within this warranty period, under normal use and care, will be repaired, replaced or refunded at our discretion. The benefits conferred by this warranty are in addition to all rights and remedies in respect of the product that the consumer has under the Competition and Consumer Act 2010 and similar state and territory laws.

Our goods come with guarantees that cannot be excluded under the Australian Consumer Law. You are entitled to a replacement or refund for a major failure and to compensation for any other reasonably foreseeable loss or damage. You are also entitled to have the goods repaired or replaced if the goods fail to be of acceptable quality and the failure does not amount to a major failure.



General Safety Instructions

IMPORTANT SAFETY INSTRUCTIONS READ CAREFULLY AND KEEP FOR FUTURE REFERENCE

Read this manual thoroughly before first use, even if you are familiar with this type of product. The safety precautions enclosed herein reduce the risk of fire, electric shock and injury when correctly adhered to. Keep the manual in a safe place for future reference, along with the completed warranty card, purchase receipt and carton. If applicable, pass these instructions on to the next owner of the appliance.

Always follow basic safety precautions and accident prevention measures when using an electrical appliance, including the following:

Electrical safety and cord handling

- **Voltage:** Make sure your outlet voltage and circuit frequency correspond to the voltage stated on the appliance rating label. If it does not match, contact our after sales support centre and do not use the appliance.
- **Electrical circuit:** Operate the unit on a separate electrical circuit. If the circuit is overloaded with other appliances, this appliance may not work properly.
- **Connection:** Insert the plug firmly into the mains wall socket. The socket must be properly earthed and within easy reach so the plug can easily be removed.
- **No timer:** Do not use with a programmer, timer, wireless plug adapter or outlet that allows control remotely, or connect to a circuit that is regularly switched on and off by your energy provider.
- **WARNING: Do not immerse!** To protect against electric shock, do not immerse the cord, plug or the appliance itself in water or other liquid. If it falls into water, immediately unplug it from the electrical outlet. Do not touch it or reach into the water. Dry the appliance and have it checked by qualified service personnel.
- **Protect from moisture:** Do not expose the electrical connections to water. Do not use the appliance, or touch the plug, with wet or damp hands, on a damp floor, or when the appliance itself is wet. Do not use it near an open window as rain may cause electric shock.
- **Short power cord:** A short power supply cord is provided to reduce the risks resulting from becoming entangled in or tripping over a longer cord. If you must use an extension cord, exercise due care and ensure that its marked electrical rating is at least as great as that of the appliance. Arrange the longer cord so that it will not drape over the benchtop or tabletop, where it can be tripped over unintentionally or pulled on by children.
- **Protect the power cord:** Do not kink, squash or strain the power cord and protect it from sharp edges and heat. Do not let the cord touch hot surfaces. Do not place anything on top of the cord. Never pull the cord to lift up, carry or unplug the appliance.

General Safety Instructions (Cont.)

- **Damaged cord:** Check the power cord regularly for visible damage. If it is damaged, do not use the appliance. A damaged cord must be replaced by the manufacturer, its authorised service centres or similarly qualified personnel in order to avoid any hazards.
- **WARNING: Do not use when damaged!** Do not pick up or operate an appliance with a damaged cord or plug, or after it malfunctions or has been dropped or damaged in any manner. Contact our after sales support centre for advice.
- **Disconnect** the appliance from the power supply when it is not in use, before cleaning and before putting on or taking off parts. Turn off all controls, then switch off the power at the outlet and remove the plug. Grip the plug when disconnecting, do not pull the cord. Allow the appliance to cool before cleaning it or putting on/taking off parts.
- **After use:** Unplug the appliance and wait until it has cooled completely before putting on or taking off parts, and before cleaning, maintenance or moving it.
- **RCD:** Unless your home is already fitted with a residual current device (safety switch), we recommend installing an RCD with a rated residual operating current not exceeding 30 mA to provide additional safety protection when using electrical appliances. See your electrician for professional advice.
- **Winding the cord:** If winding the power cord, avoid tight bends as this could damage the cord.

Usage conditions and restrictions

- **Domestic use only:** This appliance is intended for private domestic use only. It is not suitable for commercial, industrial or trade use.
- **No outdoor use:** Do not use the appliance outdoors or in areas of high humidity.
- **Intended use:** Do not use the appliance for anything other than its intended use, and only use it as described in this manual.
- **Usage restrictions:** This appliance is not intended for use by persons (including children) with reduced physical, sensory or mental capabilities, or lack of experience and knowledge, unless they have been given supervision or instruction concerning the use of the appliance by a person responsible for their safety.
- **Children:** Keep children away from the appliance when it is being used. Supervise children to ensure they do not play with the appliance. Close supervision is necessary when any appliance is used by or near children.
- **Operating environment:** To ensure efficient operation and avoid overturning, always place the appliance on a level and stable, heat and flameproof work surface. Do not use it on an inclined plane or unstable surface. Ensure there is

General Safety Instructions (Cont.)

sufficient free space (approximately 15 cm) above and around all sides for air circulation.

- **Protect from heat:** Do not place the appliance on or near a hot gas or electric stove/cooktop, oven or heater.
- **Accessories:** Do not use any accessories that are not supplied with this unit. Doing so may expose you to danger and void your warranty.
- **Non-stick plan:** Do not operate the cooker without the non-stick pan in place. Do not cover the pan or any part of the cooker with metal foil as this will cause overheating. Clean the pan after each use.
- **Cleaning:** Do not place the appliance in water or other liquids. Clean the housing only with a sponge/cloth moistened in warm, soapy water. Do not use a steel wool pad as pieces may break off and touch electrical parts, causing an electric shock hazard. Do not use harsh, abrasive cleaners. See pages 20–21 for detailed cleaning instructions.
- **WARNING: Electric shock hazard!** Do not attempt to dislodge food when the appliance is plugged into an electrical outlet.
- **Storage:** Do not store any materials other than the supplied ovenproof accessories in the appliance. Never place paper, cardboard, plastic or similar products in the cooker.
- **Repair:** The appliance has no user-serviceable parts contained inside. Do not attempt to repair, disassemble or modify it.
- **Misuse:** Improper use or installation may cause injury and/or damage. We accept no responsibility for any eventual damage or injury caused by misuse of the product or noncompliance with the instructions. Do not operate the cooker in a pantry, appliance storage area or under a wall cabinet or shelving. If storing it in an appliance storage area, always unplug the unit from the electrical outlet. Not doing so could create a risk of fire, especially if the appliance touches the walls of the garage or the door touches the unit as it closes.

WARNING: FIRE HAZARD!

- **Do not use near flammable materials** such as curtains, drapes, paper, wall coverings, tea towels or clothing.
- **Do not cover** the appliance, or store anything on top of it, to avoid overheating.
- **Do not leave unattended** when plugged in. Always unplug the appliance after use and when you are leaving the room.
- **Do not place oversize foods, metal foil packages and utensils** in the multi cooker as they may cause a risk of fire or electric shock.

General Safety Instructions (Cont.)

WARNING: HOT SURFACES! RISK OF BURNS!

Take proper precautions to prevent the risk of burns, fires or other injury to persons or damage to property.

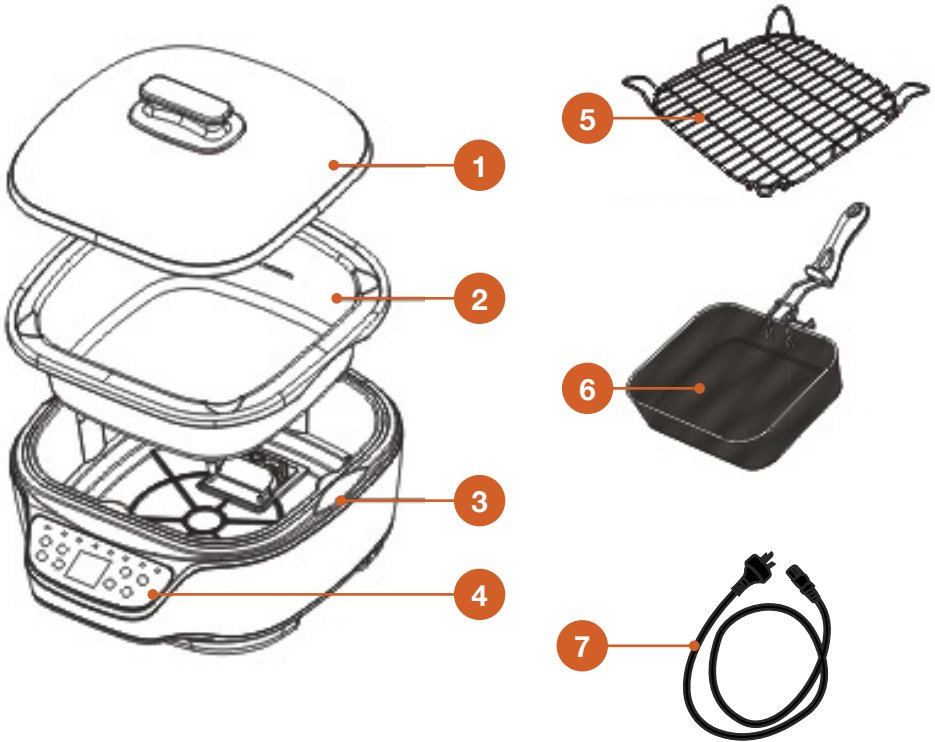


- **Do not touch hot surfaces!** This appliance generates heat during use. The temperature of the multi cooker lid and other accessible surfaces may be very high when the appliance is operating, and parts of the appliance can retain heat for some time after turning off. Always use handles, knobs and oven mitts or pot holders when the cooker is operating. Allow metal parts to cool before cleaning.
- **Do not touch hot food!** Always use tongs and oven mitts or pot holders when removing food.
- **Do not move the appliance during cooking!** Exercise extreme caution when removing hot food, oil or other liquids from the appliance. Always protect your hands with non-slip oven mitts or similar.
- **Beware of hot steam!** Hot steam is released during or after operation. Keep your hands and face at a safe distance from the vent. Hot steam may also escape when you open the door of the appliance. Take proper precautions to protect yourself from burns.
- **Prevent damage!** Keep the power cord away from hot parts of the cooker.
- **WARNING:** Avoid spillage on the connector.

NOTE: Some benchtop and table surfaces are not designed to withstand the prolonged heat generated by certain appliances. Do not set the heated multi cooker on a finished wood table. We recommend placing a hot pad or trivet under your multi cooker to prevent possible damage to the surface.

Product Overview

Scope of delivery



8-in-1 Multi Cooker

- 1 Lid (with handle)
- 2 Non-Stick Heating Pan
- 3 Base
- 4 Control Panel (see page 10)
- 5 Steam Rack (base accessory)
- 6 Fry Basket (base accessory)
- 7 Power Cord

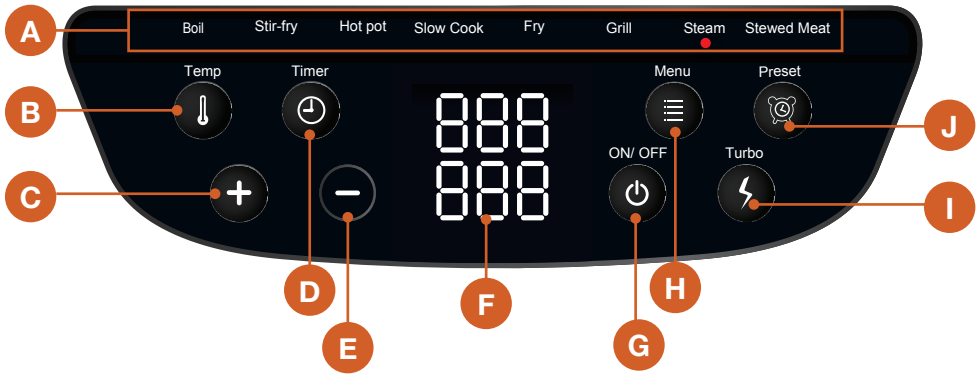
Documentation (not shown)

- Instruction Manual
- Quick Start Guide
- Warranty Certificate
- Recipe Booklet

NOTE: Due to continued product improvement, images and illustrations in this manual may vary slightly from the product purchased. All images in this manual are for reference purposes only. Parts are not necessarily pictured to scale.

Product Overview (Cont.)

Control panel



A Program indicators

These indicators light up when the respective program is selected.

B Temperature button

Press this button, and the use the [-] or [+] buttons to adjust the cooking temperature.

C [+] button

This button be used to increase the temperature and time.

D Timer button

Press this button, and the use the [-] or [+] buttons to adjust the cooking time.

E [-] button

This button be used to decrease the temperature and time.

F Display screen

Shows the time remaining and time/temperature icons.

G "ON/OFF" button

Press this button to turn the multi cooker on or off.

H "Menu" button

Press this button repeatedly to select the desired cooking mode.

I Turbo button

Press this button to switch to turbo mode.

J Preset button

Press this button to add a preset time.

Getting Started

Before first use

Unpacking

This product has been packaged to protect it against transportation damage. Unpack the appliance and keep the original packaging carton in a safe place. It will help prevent any damage if the product needs to be transported in the future, and you can use it to store the appliance when it is not in use. In the event that the packaging materials are to be disposed of, please recycle them where possible.

Make sure to remove any stickers from the surface of the appliance and all documentation. Check that there is nothing stuck between the non-stick heating pan and the power base of the appliance.

Safe packaging disposal

Plastic wrapping can be a suffocation hazard for babies and young children, so ensure all packaging materials are out of their reach and disposed of safely. Before you discard any packaging, ensure you have unpacked all the parts listed previously. Contact our after sales support centre if anything is missing.

Check the contents

Unwind the power cord to its full length and inspect all parts of the appliance for visual damage. Do not use it if anything appears to be damaged or not working properly. In case of damage, please contact our after sales support centre.

Documentation

Make sure you have read and understood all instructions and warnings in this manual. Refer to the Product Overview, pages 9–10, to familiarise yourself with the product and identify all parts. Pay particular attention to the safety instructions.

Getting Started (Cont.)

Cleaning and Assembly

- Make sure the power cord is unplugged. Before first use, clean all parts of the appliance as described below. For more detailed cleaning and maintenance instructions, see pages 20-21 of the manual.

CAUTION!

Do not immerse the multi cooker in water or other liquid.

- First, remove the non-stick pan. Then, use a dry, clean, soft cloth to wipe the electrical probe of heating tube below to ensure it is completely dry.
- Then, clean the inside of the non-stick pan with a damp sponge and a gentle dishwashing detergent. Do not use a scourer or abrasive cleaner. Dry the pan completely. Wash and dry the steam rack and fry basket using the same method.
- Re-attach the non-stick pan to the power base (Fig. 1). Ensure that it is securely inserted into the metal plate at the base of the unit with the arrow on the pan and the base aligned.
- Plug the power cord into the base of the appliance (Fig. 2).
- Place the lid on the multi cooker (Fig. 3). Plug the other end of the power cord into an appropriate wall socket.



Getting Started (Cont.)

First connection

Place the appliance on a flat, level and dry surface which should also be heat-resistant and non-flammable. Make sure:

- there is a 15 cm clear space at the back and sides of the appliance — you may have to move it away from the wall or from any objects on the benchtop
- there are no objects stored on top of or inside the multi cooker — its exterior walls get very hot when in use. Keep children away when using the appliance.

CAUTION!

This appliance generates heat during use. Do not touch hot surfaces. Only lift the lid using the handle, and while wearing an oven glove.

During this first heating process, the appliance may give off a slight odour or smoke. This is due to the elements and components being new and is no cause for concern. It is not harmful and will disappear quickly. Ensure good ventilation. Then switch off and unplug the appliance and allow it to cool to room temperature.

IMPORTANT!

- Never operate the multi cooker without the non-stick pan in place.
- Always close the lid when using the boil, steam, or hot pot functions.
- Always ensure that no food is touching the heating elements.
- **CAUTION: HOT!** Take utmost care when using the cooker on any setting. Accessible surfaces of the appliance can get very hot during use. Do not touch hot surfaces! Use handles and knobs. Always use tongs and oven mitts or pot holders when removing food.

Instructions

Cooking Modes

Table 1: "Menu" Options		
Function	Temperature (°C)	Time (minutes)
Boil	200	25
Stir-fry	150	15
Hot pot	220	60
Slow cook	120	180
Fry	150	15
Grill	240	30
Steam	220	15
Stewed Meat	120	120

CAUTION: HOT!

Cooked food, the pan, the accessories and lid can all be very hot: handle with care! To check or remove the food, always use an oven mitt or pot holder when touching a hot accessory or hot food. Do not leave the cooker unattended.

IMPORTANT!

Only use wooden or heat proof plastic utensils to prevent damage the non-stick heating pan's surface. Never use metal utensils.

Adjusting the Time and Temperature

- This appliance can provide a wide range of cooking times and temperatures to meet your cooking needs.
- First, select your desired cooking mode by repeatedly pressing the "Menu" button until the corresponding indicator light illuminates.
- Press the "Timer" button. The clock icon will flash.
- You can then press the [+] and [-] buttons to adjust the cook time. Each time you press will adjust the time by one minute.
- To make adjustments in ten minute increments, press and hold the [+] or [-] buttons. The maximum working time is 9 hrs and 59 min.
- Press the "Temp" button. The thermometer icon will flash.

Instructions (Cont.)

- You can then press the [+] and [-] buttons to adjust the cook temperature. Each time you press will adjust the temperature by 10 degree increments.
- Appliances are not intended to be operated by means of an external timer or separate remote-control system.

Preset function

- Set a default cook time and temperature, press the "Preset" button when the appliance is in standby mode.
- The default time setting is for 60 minutes.
- Press the "ON/OFF" button, then press the preset button (the default time is 1:00hr display, you can press the + or - to select you want preset time), then press the menu to select your desired cooking mode (this mode you can set the function time and temperature), finally press the "ON/OFF" button to confirm the preset, the display will start preset countdown.
- You can then press the [+] and [-] buttons to adjust the cook time. Each time you press will adjust the time by one minute.
- To make adjustments in ten minute increments, press and hold the [+] or [-] button.
- Press the "Temp" button to adjust the temperature.
- You can then press the [+] and [-] buttons to adjust the cook temperature. Each time you press will adjust the temperature in ten degree increments, press the [+] or [-] button.
- If you want to change the cooking temperature and time, press the "Menu" button to reset these values.
- Once you are happy with these presets, press the "ON/OFF" button to confirm. Press the "ON/OFF" button again if you wish to cancel the settings.

Turbo function

- Press the "Turbo" button when first switching the cooker on to quickly heat it up. The appliance temperature will automatically be set to 240°C (the highest available temperature) and the timer will automatically be set to 30 minutes.

Boil/Hot pot

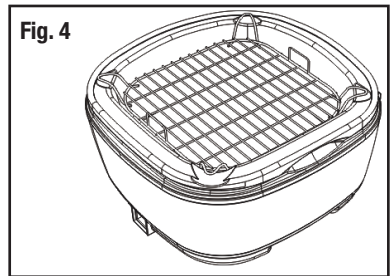
- Press the "ON/OFF" button to switch the appliance on.
- Open the lid, and add your ingredients and liquid directly to the (clean) non-stick pan, before closing the lid again.
- Select the "Boil" or "Hot pot" functions by repeatedly pressing the "Menu" button until the corresponding indicator light illuminates press "ON/OFF" button again to confirm the function.

Instructions (Cont.)

- To retain heat and moisture during cooking, do not lift the lid. When using the boil setting, always ensure that there is sufficient liquid to cover the food.
- The remaining time will appear on the display screen. Once the time is up and the food has finished cooking, the display will power off and you can unplug the appliance.
- Carefully lift the lid of the multi cooker using the handle and remove your food.

Slow Cook/Steam

- Open the appliance lid.
- Place the steam rack on the base or the appliance, on top of the non-stick pan (Fig. 4).
- Add 2000 mL of water (keeping the water level below the rack) before adding your ingredients to the steam rack.
- Press the "ON/OFF" button to switch the appliance on.
- Select the "Slow Cook" or "Steam" functions by repeatedly pressing the "Menu" button until the corresponding indicator light illuminates press "ON/OFF" button again to confirm the function.
- To retain heat and moisture during cooking,



do not lift the lid. When using these settings, always ensure that there is sufficient liquid.

- The remaining time will appear on the display screen. Once the time is up and the food has finished steaming, the display will power off and you can unplug the appliance.
- Carefully lift the lid of the multi cooker using the handle and remove your food. Be careful, as there will still be a large amount of steam when opening the lid.

Stir Fry / Grill

- Press the "ON/OFF" button to switch the appliance on.
- Open the lid, and add a few tablespoons of oil to the non-stick pan. Add your ingredients, before closing the lid again.
- Select the "Stir Fry" or "Grill" functions by repeatedly pressing the "Menu" button until the corresponding indicator light illuminates press "ON/OFF" button again to confirm the function.
- To retain heat during cooking, do not lift the lid, except to stir the ingredients

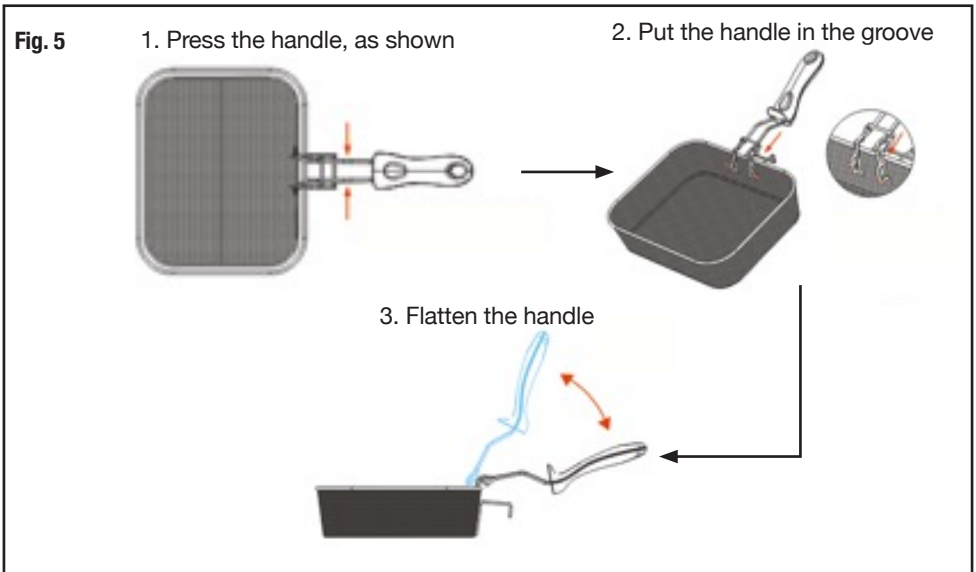
Instructions (Cont.)

when necessary. Take care, as there will be steam.

- The remaining time will appear on the display screen. Once the time is up and the food has finished cooking, the display will power off and you can unplug the appliance.
- Carefully lift the lid of the multi cooker using the handle and remove your food.

Fry

- Open the appliance lid. Pour enough oil to submerge your ingredients into the non-stick pan.
- Press the "ON/OFF" button to switch the appliance on.
- Select the "Fry" function by repeatedly pressing the "Menu" button until the corresponding indicator light illuminates press "ON/OFF" button again to confirm the function. This will start heating up the oil.
- Attach the handle to the fry basket (Fig. 5). Then, place your ingredients into the fry basket.



CAUTION: HOT!

The oil will be incredibly hot, and can cause serious burns. The oil can splash when items are being added. NEVER add ice or water to the oil.

Instructions (Cont.)



- Carefully lower the fry basket into the hot oil (Fig. 6).
- Remove the basket once the items are cooked sufficiently. Allow fried foods to rest on clean paper towel to absorb any oil residue.
- Once you have finished frying, the display will power off and you can unplug the appliance.

Other Modes

- For all other options, first press the "ON/OFF" button to switch the appliance on.
- Add your ingredients to the non-stick pan (without adding oil), before closing the lid again.
- Select the desired function. The corresponding indicator light will illuminate press "ON/OFF" button again to confirm the function.
- To retain heat during cooking, do not lift the lid except to stir when necessary. Take care when lifting the lid as steam will escape.
- The remaining time will appear on the display screen. Once the time is up and the food has finished cooking, the display will power off and you can unplug the appliance.
- Carefully lift the lid of the multi cooker using the handle and remove your food.
- Once cooking has started, the "Turbo" and "Preset" keys will no longer work. Press the "ON/OFF" button to cancel and begin to set your programs again.

NOTE:

The appliance will turn off after 15 minutes without any operation.

FAQs and Troubleshooting Guide

If your multi cooker fails to operate, or you experience any other problems with the appliance, check in Table 2 below for solutions to common problems. If none of the solutions offered helps you solve the problem, please contact our after sales support centre for advice or to arrange a service.

Problem	Potential cause and solution
The multi cooker is not turning on.	<ul style="list-style-type: none">• Check and ensure that you have selected a function and set a time and temperature.• Check and ensure that the power cord is plugged in, the power is turned on and that the outlet is working (check the appliance at a different outlet).
Smoke is coming from the appliance when I switch it on	<ul style="list-style-type: none">• If you are using the appliance for the first time, this is normal and no cause for concern; it should subside soon. Ensure good ventilation.• If you have used the cooker before, unplug the appliance and let it cool. Check and ensure that the interior surfaces and all accessories inside the oven are clean and free of food residues.• If you cleaned the appliance properly and it continues to emit smoke, stop using the appliance and contact our after sales support centre.
There are noises during operation.	Check and ensure that the accessories are securely inserted in the cooker.
Food is undercooked.	<ul style="list-style-type: none">• You may have overfilled the pan. Put smaller batches of food in the pan, which are fried more evenly.• Check and ensure that the temperature is set correctly.
Food is overcooked.	You may have to adjust (lower) the set cooking time and/or temperature. Ensure you are using an appropriate cooking mode - see page 14 for specifics.

Other Useful Information

Cleaning and care

WARNING!

- Before cleaning or storing the appliance, always unplug the cooker from the electrical outlet and allow it to cool completely.
- Never immerse the appliance, cord or plug in water or any other liquid. Never wash this appliance or any parts or accessories in a dishwasher.
- Never use solvents, cleaning powders, wire brushes, steel wool pads or any other harsh abrasive cleaners, as such materials will damage the finish.

Exterior surfaces

Wipe the appliance housing clean with a damp cloth and a mild detergent. Apply the cleansing agent to the cloth, not directly onto the cooker. Dry thoroughly.

Interior surfaces

To keep your cooker in good working order, make sure to remove all food residues and grease splatters from interior surfaces on a regular basis. Regular cleaning will also reduce the fire hazard risk.

- Unplug the 8-in-1 multi cooker from the power supply. Allow the appliance to cool completely.
- Remove all accessories and the non-stick pan from the appliance body.

Heating tube

- Use a dry, clean, soft cloth to wipe the electrical probe of heating tube to ensure it is completely dry.

Accessories

- The accessories (non-stick pan, steam rack, fry basket) should be hand-washed in hot sudsy water.
- If scrubbing is necessary, use a nylon scouring pad or nylon brush. Do not use abrasive or steel wool this may damage the non-stick surface. Rinse and dry the accessories thoroughly after washing.

Other Useful Information (Cont.)

Storage

- When the appliance is not in use, disconnect it from the power supply.
- Storing the appliance and accessories safely in the original packaging will protect it from dust.
- Store the appliance in a dry location, out of reach of children.
- Do not store any materials other than the supplied ovenproof accessories in the appliance. Never place paper, cardboard, plastic or similar products in the cooker.
- Do not place any heavy items on top of appliance during storage as this may result in damage of appliance.

Service, repair and spare parts

- This appliance requires little maintenance. It contains no user serviceable parts. Servicing is necessary if the multi cooker has been damaged, or if it has been exposed to rain or moisture, or if it does not work correctly, or has been dropped. In such a case, please contact our after sales support centre to arrange for examination or repair of the product. **Never attempt to open the housing or repair the appliance yourself.**
- To inquire about spare parts for this appliance, please contact our after sales support centre on 1300 112 534 or via tempo.org/support.

Other Useful Information (Cont.)

Technical specifications

Power	1500 W
Voltage	220–240 V~
Frequency	50–60 Hz
Capacity	5 L
Temperature setting range *	50–240°C
Dimensions (approx.)	386 (W) x 346 (D) x 251 (H) mm
Weight (approx.)	4.4 kg

* The individual time and temperature setting ranges vary depending on the program.

Compliance

This appliance has been fully tested and meets all requirements as set out by standards AS/NZS 60335.1, AS/NZS 60335.2.9, AS/NZS 60335.2.13 and AS/NZS 60335.2.15 for electrical safety.



The RCM Mark (Regulatory Compliance Mark) indicates that the product complies with the relevant guidelines of the ACMA as well as corresponding government requirements for the safety of electrical devices.

Responsible disposal



Packaging materials are recyclable. Please dispose of them responsibly for recycling.



At the end of its working life, do not throw this appliance out with your household waste. Electrical and electronic products contain substances that can have a detrimental effect on the environment and human health if disposed of inappropriately. Observe any local regulations regarding the disposal of electrical consumer goods and dispose of it appropriately for recycling.

Contact your local authorities for advice on recycling facilities in your area. Or find recycling scheme services listed on Planet Ark's website at www.recyclingnearyou.com.au, or call Planet Ark on 1300 733 712.



8-in-1 Multi Cooker

Repair and Refurbished Goods or Parts Notice

Unfortunately, from time to time, faulty products are manufactured which need to be returned to the supplier for repair.

Please be aware that if your product is capable of retaining user-generated data (such as files stored on a computer hard drive, telephone numbers stored on a mobile telephone, songs stored on a portable media player, games saved on a games console or files stored on a USB memory stick) during the process of repair, some or all of your stored data may be lost. We recommend you save this data elsewhere prior to sending the product for repair.

You should also be aware that rather than repairing goods, we may replace them with refurbished goods of the same type or use refurbished parts in the repair process.

Please be assured though, refurbished parts or replacements are only used where they meet ALDI's stringent quality specifications.

If at any time you feel your repair is being handled unsatisfactorily, you may escalate your complaint. Please telephone us on 1300 112 534 or write to us at:

Tempo (Aust) Pty Ltd (ABN 70 106 100 252)
PO BOX 132, Frenchs Forest NSW 1640, Australia

Web Support: tempo.org/support

Tempo Help Desk: 1300 112 534 (Aust)
(Operating Hours: Mon–Sat 09:00 am to 06:00 pm AEST)





Warranty returns

Should you for any reason need to return this product for a warranty claim, make sure to include all accessories with the product.

Product does not work?

If you encounter problems with this product, or if it fails to perform to your expectations, make sure to contact our After Sales Support Centre on 1300 112 534 for advice.

For an electronic copy of this manual, please contact our after sales support centre.

Instruction Manual Revision Index

Version No	Issue Date	Description
V1.0	26 August 2023	Original release (2023)
V1.1	11 October 2023	Minor updates