

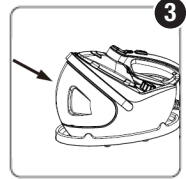
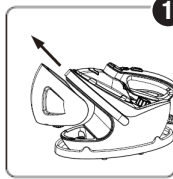


Let's get your new 2-in-1 steam iron & garment steamer ready to use!

This quick start guide contains basic instructions to get you started. For the full picture, please refer to the supplied manual with comprehensive usage instructions and important safety advice.

A Filling the water tank

- 1 Grip the water tank firmly and pull it out of the main unit. Turn the water tank over and twist open the tank cap.
- 2 Fill the water tank with water, then close the tank and tighten the cap.
- 3 Replace the closed water tank into its space on the main unit.

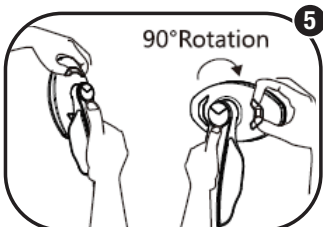
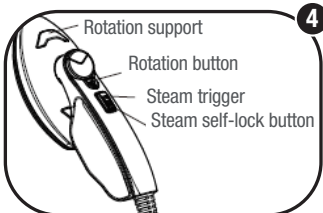


Water usage

- To extend the product life, we recommend using purified water: distilled, demineralised, or cold, boiled water. Always add cold water to the tank, hot water will damage the tank and the inside of the appliance.
- Never fill the water tank with chemical substances, perfumes, vinegar, mineral water, starch, descaling agents, ironing aids, cleaning agents or liquids other than water when using the garment steamer. These products may cause damage to the appliance.
- Before filling and refilling with water, always remove the plug from the mains power socket. Never refill the water tank while the appliance is connected to the electricity supply as there is a risk of electric shock.

IMPORTANT: Prime the pump before first use!

It is important that you prime the pump before using the garment steamer for the first time. This will ensure steam is produced quickly when you need it. Please follow the instructions on page 13 in the manual.



B Adjusting the steam head

The steam head position of your new garment steamer can be rotated 90 degrees so you can steam items in vertical (hanging) position, or steam-iron them on your ironing board.

Please refer to illustration (4) for the different buttons and to illustration (5) for the rotation sequence.

With one hand, hold the steam head handle and press the rotation button firmly until you hear the lock disengage. With the other hand, grip the rotation support.

For **horizontal ironing** the steam head should be aligned with the handle.

For **vertical steaming** the steam head should be rotated 90 degrees to the right.

Turn over the page for usage instructions ...

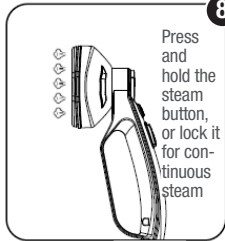
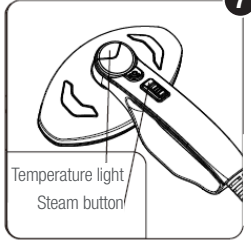
Vertical steaming

C

Hang the garment to be steamed on a coathanger in a suitable area accessible for steaming.

To start, plug in the appliance, turn the steam control knob to the desired position and wait until the temperature light turns off.

Press down the steam trigger button for a burst of steam or press and pull it towards you to lock for continuous steam.



Direct the steam away for a few seconds before you start steaming your garment as the initial steam may contain water droplets.

With one hand pull the garment flat and steam it from top to bottom. We recommend you put the anti-scald glove on the hand you are using to pull the garment in place for steaming.

Hold the steam head upright and direct the steam towards the creases in the fabric.

D Horizontal ironing

Make sure steam head is in the correct position for horizontal ironing.

Place the garment on an ironing board and prepare the appliance for use.

When the temperature light switches off, press the steam trigger for a burst of steam or press and pull it towards you to lock for continuous steam emission.

Guide the iron smoothly over the garment to remove creases and wrinkles.

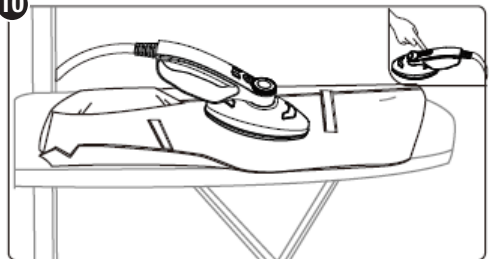
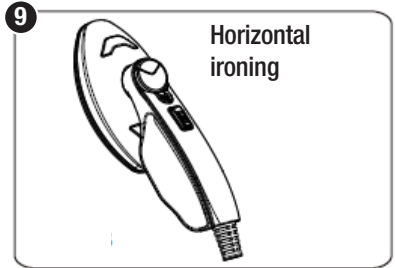
For dry-ironing, release the steam trigger and the steam emission will stop.

To add a burst of steam when dry-ironing, press the steam trigger briefly when the temperature light is off, then release the button. Repeat this action as required to remove stubborn creases.

Release the steam trigger when you have finished steaming/ironing the garment.

CAUTION: Hot!

If you need to replace the steam head on the main unit before the soleplate has cooled down, take utmost care to avoid scalding. Only touch the rotation support when rotating the steam head.



Give us a call

What? You mean this Quick Start Guide didn't have ALL the answers? The manual has more comprehensive instructions, or speak to us. Call our After Sales Support on 1300 112 534.

Well done, you made it! Now sit back and relax ... your new steam iron & garment steamer is automatically covered by a 1 year warranty.